

"THE FUTURE INTERESTS ME - I'M GOING TO SPEND THE REST OF MY LIFE THERE."

Mark Twain, (1835 – 1910)

Unequal educational opportunities, increasing poverty and social injustice

Do you think that Germany has to change? That it needs someone to tackle the problems and not just talk about them, someone who genuinely cares about the future generations? This requires experts who critically assess the system, analyse problems, develop proposals for solutions and communicate them to the relevant target group!

This is exactly what the new bachelor's programme "Sustainable Social Policy – Society, Economics, Communication" is designed for. The teaching is conducted by experts in social policy and social protection who are highly experienced in the field of social policy and aim to prepare students for such tasks. For us, sustainable social policy must demonstrate sustainability not only in financial terms but above all regarding individuals and society. To strengthen our interdisciplinary access to socio-political issues, we cooperate in research and teaching with the Institute for Political Science and Sociology at the University of Bonn, as well the Chair for Social Policy and Methods of Qualitative Social Research and the Department for Cooperatives (both at the University of Cologne).

When designing the course, we made sure that the theoretical part is always clearly connected to practice. The main subjects and the practical term offer students the opportunity to set individual accents and specialise. In addition, the Bonn-Rhein-Sieg University of Applied Sciences places great value on teaching in small groups, which enables the lecturers to address current topics and the interests of the students.

Do you have questions?

Please do not hesitate to contact us!



📍 AT A GLANCE

Degree

Bachelor of Arts (BA)

Duration of study

7 terms (full-time); including a practical term

Commencement of studies

Each winter term

Accreditation

evalag

Application

Online via the university website

Application deadline

July 15th

Admission requirements

- General Higher Education Entrance Qualification
- Advanced Technical College Certificate
- Professional qualification or equivalent qualification

In case of international educational certificates:

- Determination of qualification equivalence
- Proof of required German language skills (DSH 2 or TestDaF with the result 4x4)

For more information:

🌐 www.h-brs.de/de/bewerben

Social Policy and Social Security Studies

Sustainable Social Policy

Campus Sankt Augustin

Hochschule Bonn-Rhein-Sieg
Grantham-Allee 20
53757 Sankt Augustin

Academic head:

Prof. Dr. Remi Maier-Rigaud

Department secretariat

Tel. +49 2241 865 9760
fb06.sekretariat@h-brs.de

General student counselling

Tel. +49 2241 865 9656
studienberatung@h-brs.de

Office of student affairs

Tel. +49 2241 865 9649
studierendensekretariat@h-brs.de

International office

international.office@h-brs.de

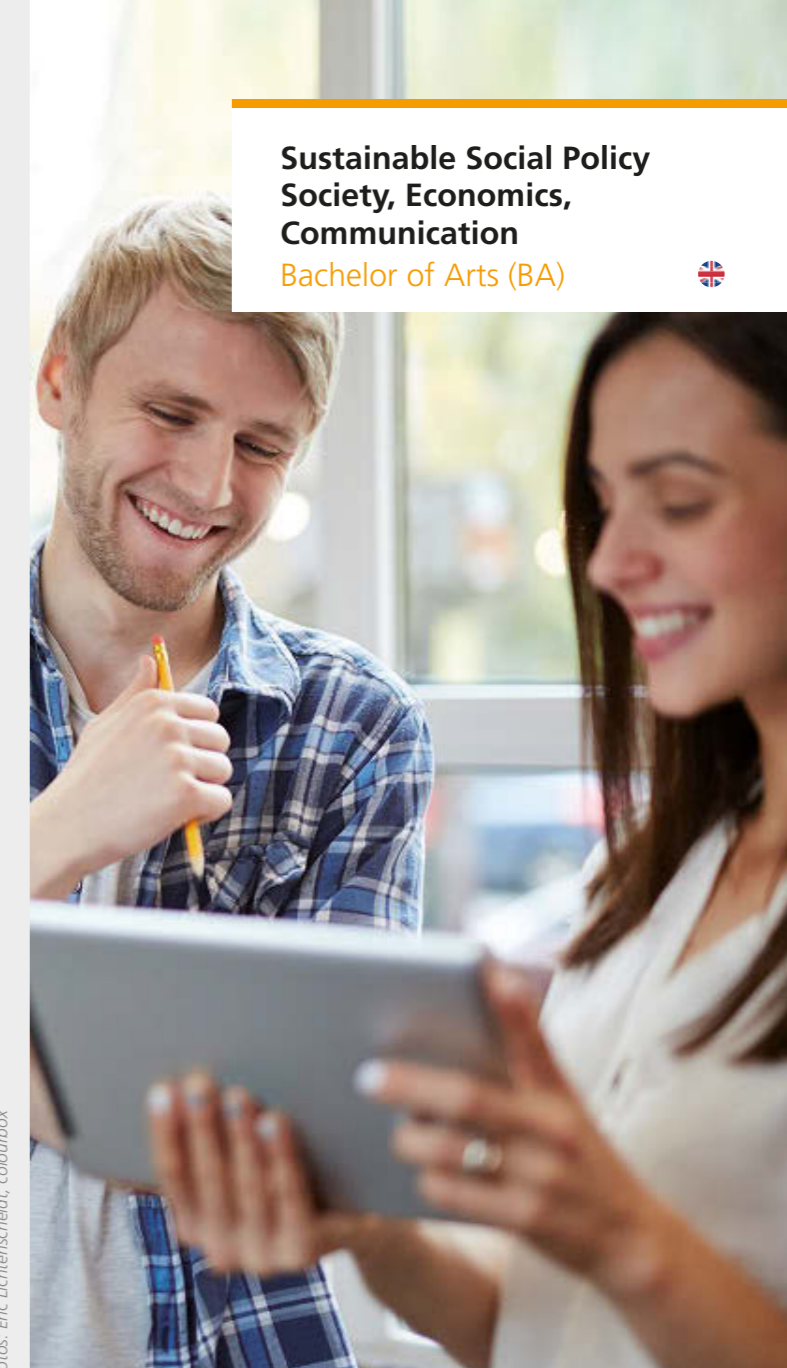
🌐 www.h-brs.de

🌐 www.h-brs.de/de/sv/nachhaltige-sozialpolitik

📘 www.facebook.com/hsbrs

**Sustainable Social Policy
Society, Economics,
Communication**

Bachelor of Arts (BA)



Stand 04/2018 Fotos: Eric Lichtenscheidt, colourbox



**Hochschule
Bonn-Rhein-Sieg**
University of Applied Sciences

CARE FOR A PROFESSIONAL CHALLENGE IN SOCIAL POLICIES?

Then the bachelor's programme in "Sustainable social policy" is exactly the right thing. The programme is aimed at all those who are passionate about current socio-political issues, those who are determined to find solutions and become part of these solutions.

STUDY CONTENTS

In the first four terms, fundamentals in sociology, economics and the study of politics, law and communication are complemented by modules on interdisciplinary topics in social policy. Additional modules on research methods prepare for academic work and help develop analytical thinking. In the following terms, students may choose between three specialisations: economics, society, or communication. In addition, supplementary subjects offer a variety of options to develop a particular profile and to set individual accents.

CAREER PROSPECTS

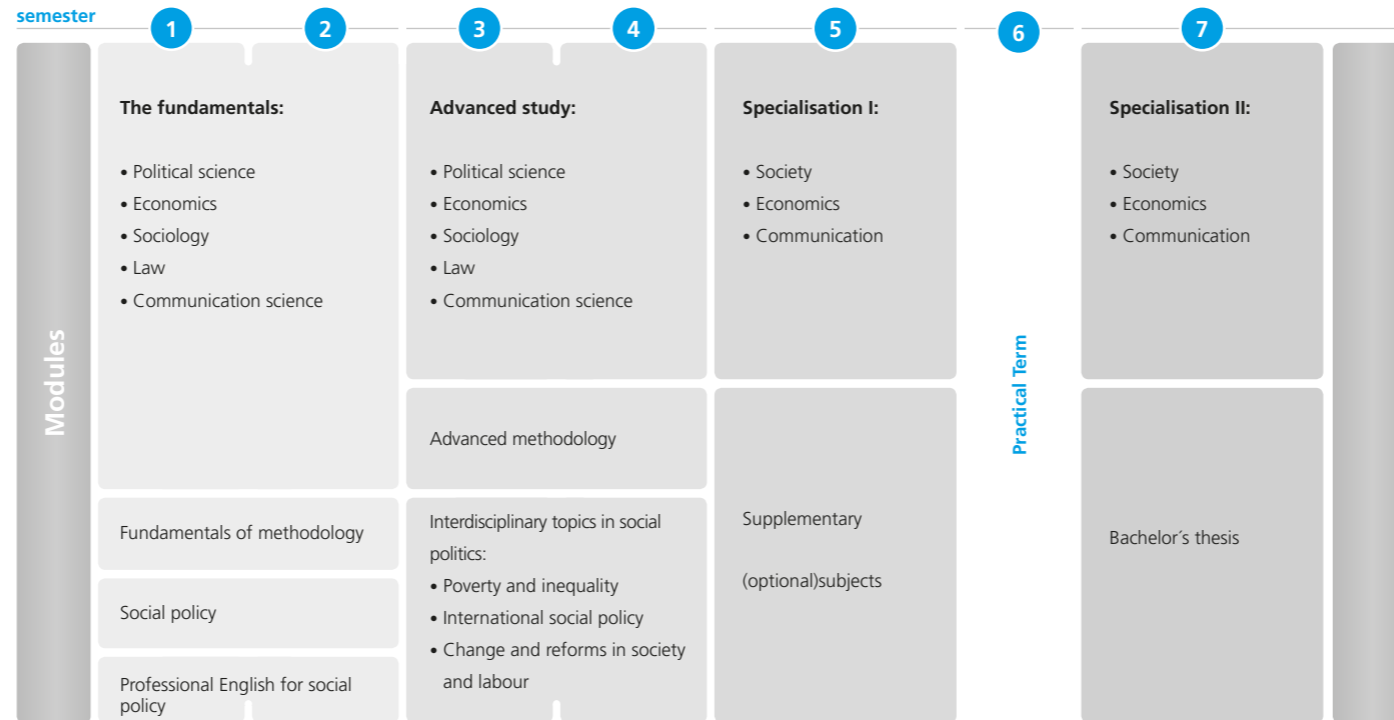
The professional field of social policy is wide-ranging and offers many possibilities. The tasks include, for instance, spotting trends, conducting situation analysis, examining design options and developing communication strategies.

Those who would like to start work immediately after receiving the bachelor's degree will find opportunities in the academic and political "control rooms" of social policy. Potential employers include ministries, social security institutions, political parties, trade unions, associations, foundations, NGOs and media companies, as well as consulting, educational and research facilities.

For those who prefer to go on studying, the department offers an internationally oriented English-language master's degree programme: "Analysis and Design of Social Protection Systems".



CURRICULUM



The new programme in "Sustainable social policy" is more versatile than a conventional degree in politics or sociology, which is what I'd be otherwise doing. Besides, this university is very practice-oriented and even has a practical term. And then? I'd like to work for a non-governmental organisation; there are several in this region, after all."

Henning Schneider,
deputy student representative class of 2017



The creation of effective social policies requires interdisciplinarity: life, after all, is diverse. At the same time, the solutions must be sustainable in socio-political practice, so as to meet the future challenges of our society. The graduates of the programme "Sustainable Social Policy" will be prepared to do so.

Prof. Dr. Remi Maier-Rigaud,
academic head



The "Sustainable Social Policy" team